

ÜBERSICHTSZEICHNUNG

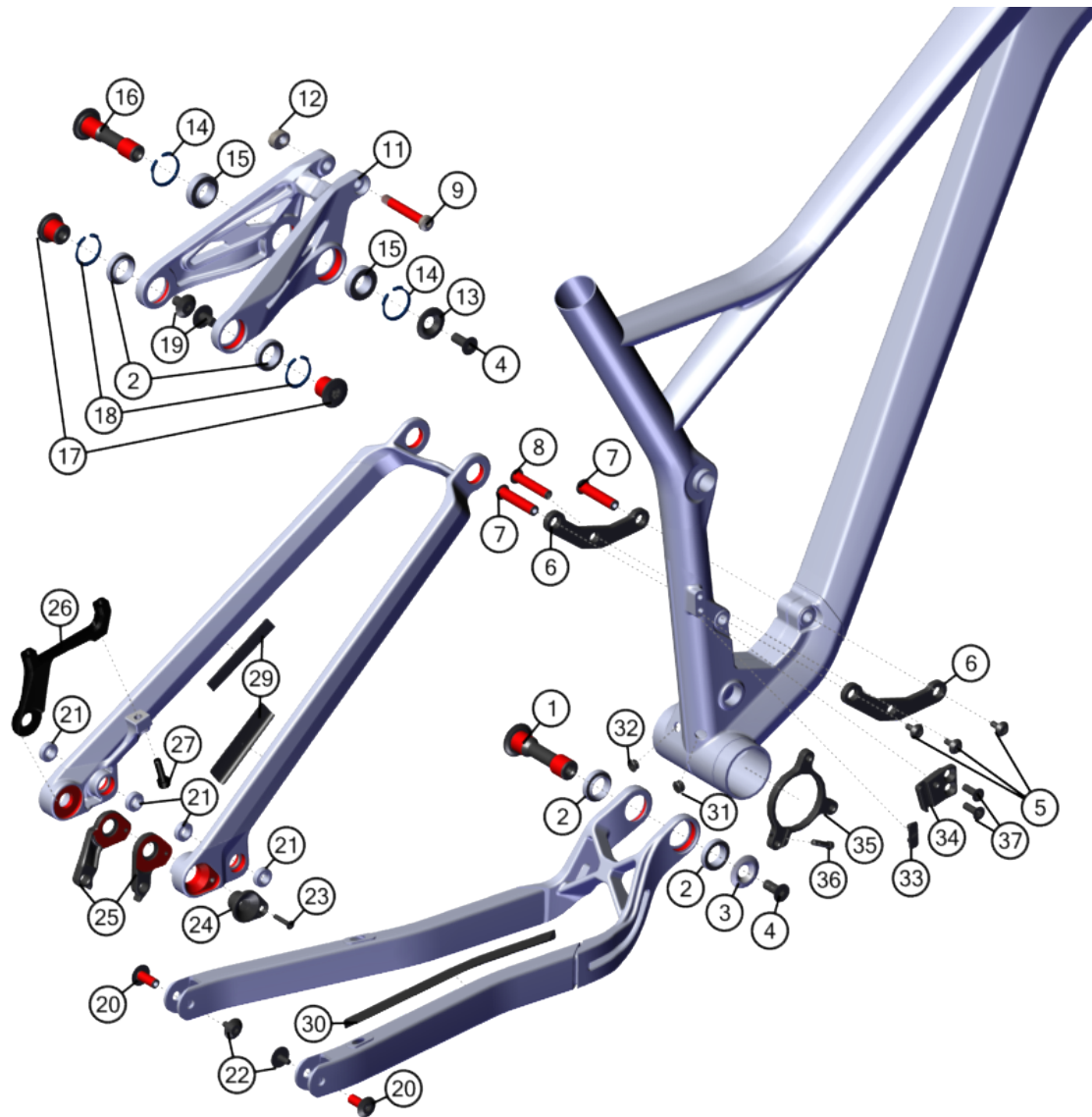


SLAMR Base (MY21)

2020-06-05

V01

ÜBERSICHTSZEICHNUNG



Hinweis:

Bei Schrauben muß mittelfeste Gewindegewissicherung verwendet werden.
Rote Flächen müssen gefettet werden.

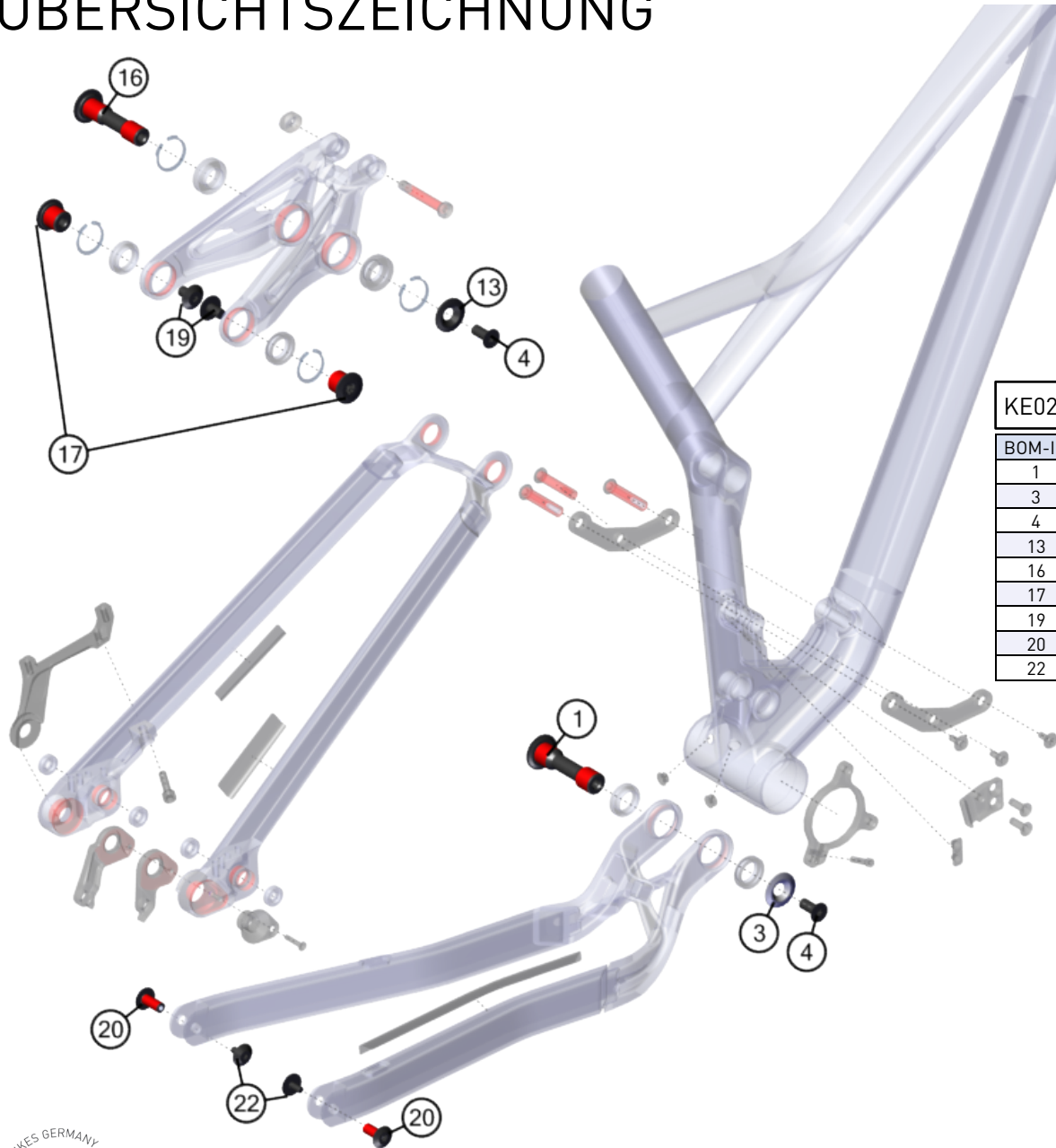
note:

use medium strength screwlock for screw threads.
red surfaces has to be greased.

ÜBERSICHTSZEICHNUNG

BOM-ID	Description	Specification	Torque	Item no.	QTY
1	Axle Main Pivot	T50 - \varnothing 17 (M8)	8 Nm	SM1364	1
2	Seat Stay & Main Pivot bearing			SM1379	4
3	Cap Nut Main Pivot			SM1370	1
4	Flat Head Screw M8	T30 - M8 x 20mm	12 Nm	SM1375	2
5	Screw Shock Mount	T25 - M5 x 12mm	6 Nm	SM1377	3
6	Shock Mount			FROT0016	2
7	Axle Shock Mount	T30- \varnothing 9 (M5) x 40,5mm	6 Nm	FRAX0001	2
8	Axle Shock	T30 - \varnothing 8 (M5) x 31 mm	6 Nm	EZ2254	1
9	Axle Shock Mount Bolt Top	T25 - M8 x 51mm	6 Nm	FRAX0005	1
11	Rocker one piece			FROT0023	1
12	Insert nut for Rocker			FRNT0004	1
13	Cap Rocker Fix Pivot			FROT0020	1
14	Circlip RFP	28mm DIN 472		FRWS0028	2
15	Seat Tube - Rocker Pivot Bearing			SM1380	2
16	Axle Rocker Fix Pivot	T50 - \varnothing 15 (M8) x 62,5mm	12 Nm	FRAX0006	1
17	Axle Seat Stay Pivot	T50 - \varnothing 17 (M8) x 13,5mm	8 Nm	FRAX0007	2
18	Circlip SSP	26mm DIN 472		FRWS0026	2
19	Screw SS Yoke	T30 - M8 x 13mm	8 Nm	SM1378	2
20	Axle Horst Link	T30 - \varnothing 8 (M5) x 18,9mm	6 Nm	SM1363	2
21	Horst Link Pivot Bearing			SM1381	4
22	Screw CS&DO	T25 - M5 x 11mm	6 Nm	SM1376	2
23	Flat Head Screw M4	T15 - M4 x 20mm	0,8 Nm	FRSC0061	1
24	Hanger Mount			FRNT0061	1
25	Shimano Hanger (A1)			FRHG0058	1
25	SRAM Hanger (A2)			FRHG0057	1
26	Disc Brake Mount			FROT0013	1
27	Post Mount Screw	T30 - M6 x 26mm	8 Nm	SM1372	1
29	S/S Protector			SM1392	2
30	C/S Protector			SR0617	1
31	BB cap RD			FRCG0001	1
32	BB cap BR			SM1390	1
33	FD cap			SM1396	1
34	FD Direct Mount			SM1383	1
35	ISCG Adapter			SM1395	1
36	Screw ISCG			SM1393	1
37	Flat Head Screw M6	T30 - M6 x 12mm	6 Nm	SM1374	2

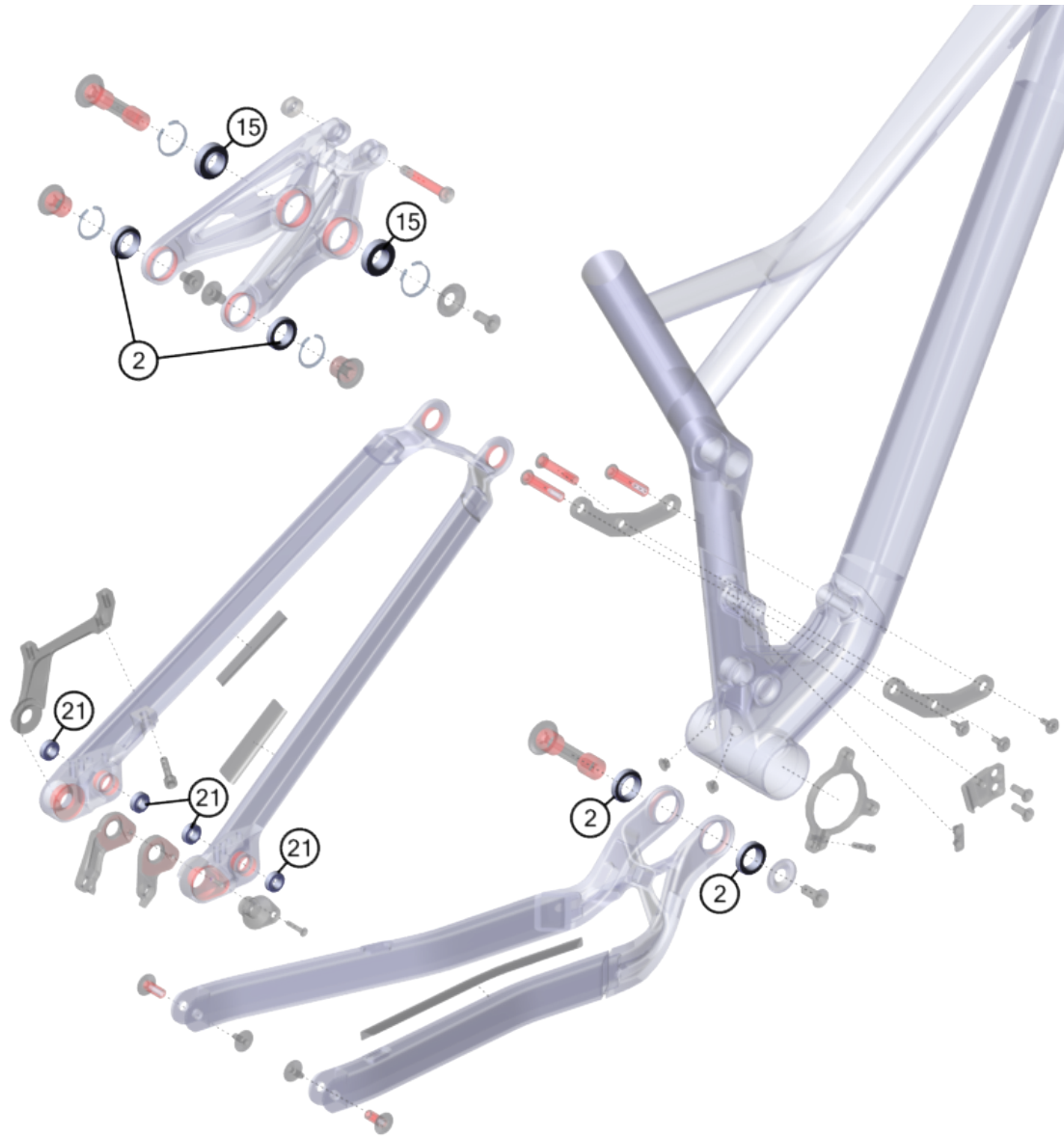
ÜBERSICHTSZEICHNUNG



KE0299 Axle & Screw Kit

BOM-ID	Description	Specification	Torque	Item no.	QTY
1	Axle Main Pivot	T50 - ø17 (M8)	8 Nm	SM1364	1
3	Cap Nut Main Pivot			SM1370	1
4	Flat Head Screw M8	T30 - M8 x 20mm	12 Nm	SM1375	2
13	Cap Rocker Fix Pivot			FROT0020	1
16	Axle Rocker Fix Pivot	T50 - ø15 (M8) x 62,5mm	12 Nm	FRAX0006	1
17	Axle Seat Stay Pivot	T50 - ø17 (M8) x 13,5mm	8 Nm	FRAX0007	2
19	Screw SS Yoke	T30 - M8 x 13mm	8 Nm	SM1378	2
20	Axle Horst Link	T30 - ø8 (M5) x 18,9mm	6 Nm	SM1363	2
22	Screw CS&DO	T25 - M5 x 11mm	6 Nm	SM1376	2

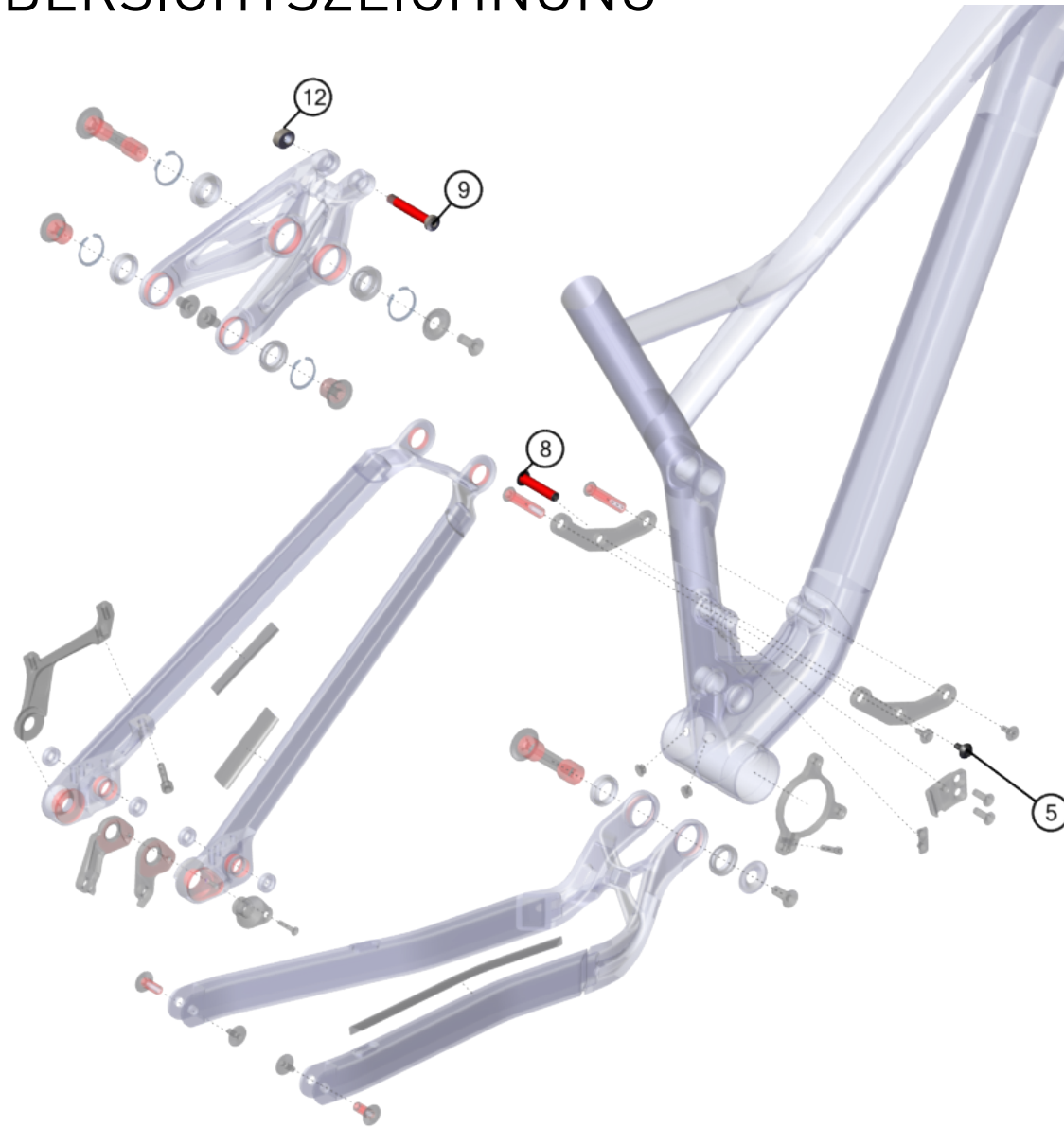
ÜBERSICHTSZEICHNUNG



KE0276 Bearing Kit

BOM-ID	Description	Item no.	QTY
2	Main Pivot & Seat Stay Pivot	SM1379	4
15	Seat Tube - Rocker Pivot Bearing	SM1380	2
21	Horst Link Pivot Bearing	SM1381	4

ÜBERSICHTSZEICHNUNG



KE0303 Rear Shock Screw Kit

BOM-ID	Description	Specification	Torque	Item no.	QTY
5	Screw Shock Mount	T25 - M5 x 12mm	6 Nm	SM1377	1
8	Axle Shock	T30 - ø8 (M5) x 31mm		EZ2254	1
9	Axle Shock Mount Bolt Top		6 mm	FRAX0005	1
12	Insert nut for Rocker			FRNT0004	1